

National Travel Health Network and Centre

Annual Report 2014 - 2015



OVERVIEW	3
Directors' Statement	
GOVERNANCE	4
NaTHNaC Technical Advisory Group	
NaTHNaC Senior Management Team (SMT)	
NaTHNaC Team	
FINANCIAL REVIEW	7
NaTHNaC Financial Report	
OPERATIONS	10
Key Service Areas	
Core Objectives	
Team Achievements for 2013 - 2014	
Operational Highlights from 2013 - 2014	

OVERVIEW

Directors' Statement

We started our 3rd year at NaTHNaC with a feeling of progress after a challenging first 2 years. It has yet again been a busy year, which has seen the consolidation of a number of initiatives such as NaTHNaC's Learning Zone, our media communications, our ongoing collaborations with national and international partners in areas of disease surveillance, and a now well established travel medicine training programme for Specialist Registrars in conjunction with the Hospital for Tropical Diseases. 2014-2015 has also seen an investment in the development of our new website TravelHealthPro, and investment and growth in our team.

With the continuing hard work of our team, we have again been able to post a healthy end of year financial statement. We thank them again for all their hard work and commitment, and remain grateful for the continuing support of our commissioners Public Health England (PHE), hosts University College London Hospitals (UCLH), and partners on NaTHNaC's Technical Advisory Group.

There remains much more for NaTHNaC to do; the forthcoming year promises to be at least as busy as last year, with the appointment of a new NaTHNaC Chair, the launch of our new website, development of our educational offerings, use of new technology to support our users, and much more. Most importantly we hope to become a better partner for our stakeholders and users.

Vanessa Field and Dipti Patel

GOVERNANCE

NaTHNaC was created by the Department of Health in 2002. We are now commissioned by the Public Health England (PHE) and work in partnership with our network founders:

- The Hospital for Tropical Diseases
- Liverpool School of Tropical Medicine
- London School of Hygiene and Tropical Medicine
- Public Health England
- University College London Hospital (UCLH) NHS Foundation Trust

NaTHNaC's broad aim is to protect the health of the British Traveller, and it does this by providing evidence-based advice, information, and training to health professionals, travellers, the travel industry, and to national government.

NaTHNaC Technical Advisory Group

The NaTHNaC Technical Advisory Group (TAG) was formed in April 2014, and has representation from each of the NaTHNaC partners plus PHE, UCLH NHS Foundation Trust and the Department of Health. NaTHNaC is grateful for the support of each member organisation. A new chair, Dr Rima Makarem was appointed in April 2015.

Technical Advisory Group Members:

- Dr Nick Beeching Liverpool School of Tropical Medicine
- Dr Ron Behrens Hospital for Tropical Diseases
- Dr Graham Bickler Public Health England
- Dr Michael Brown London School of Hygiene and Tropical Medicine
- Dr Vanessa Field NaTHNaC
- Dr Vanya Gant University College London Hospitals NHS Foundation Trust
- Dr Jane Jones Public Health England, Travel and Migrant Health Section
- Prof David Laloo Liverpool School of Tropical Medicine
- Dr Rima Makarem Chair
- Dr Ruth Parry (ex officio) Department of Health
- Dr Dipti Patel NaTHNaC
- Mr Robert Sokoo Public Health England
- Ms Melanie Watts University College London Hospitals NHS Foundation Trust
- Mr John de Vial ABTA (observer)

NaTHNaC Senior Management Team (SMT)

The current NaTHNaC SMT was established by the new directors in June 2012.

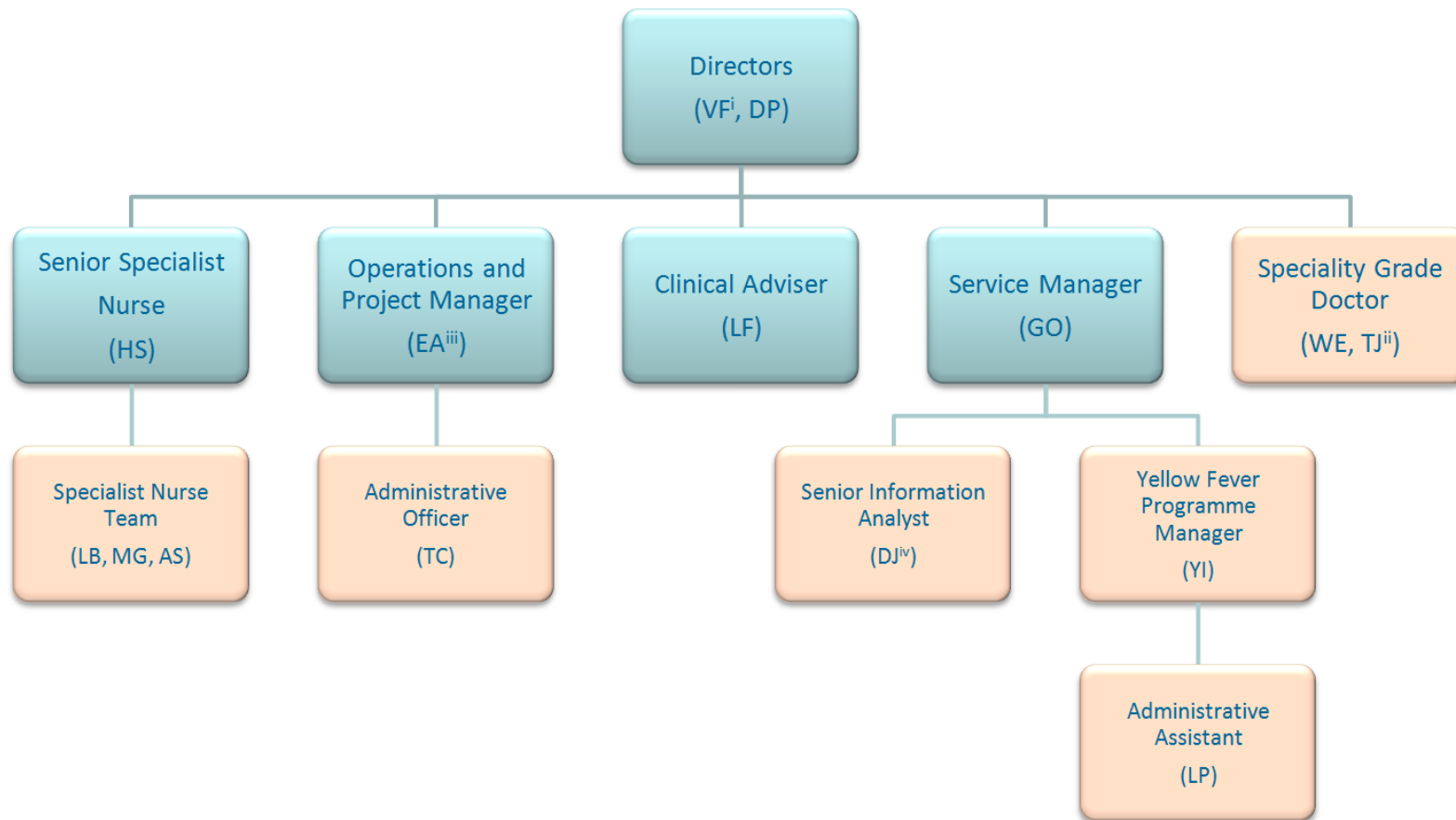
The NaTHNaC SMT consists of the directors, operations and project manager, service manager, senior nurse, and clinical adviser. It is chaired by the directors and meets on a bi-monthly basis.

The SMT is responsible for the strategic and operational management of NaTHNaC and implementing any policies and strategies as agreed by the TAG.

NaTHNaC Team

NaTHNaC's expertise is provided by 17 staff based in London or Liverpool. They include doctors, nurses, an information analyst, and administrators (see organogram on page 7).

Emily Aidoo (EA)	Operations and Project Manager (from January 2015)
Lynda Bramham (LB)	Specialist Nurse Adviser, Sheffield
Terence Corrigan (TC)	Administrative Officer, London
Carolyn Driver (CD)	Specialist Nurse Adviser (Telephone Advice Line Service)
Dr Will Elson (WE)	Speciality Grade Doctor (from October 2014)
Dr Vanessa Field (VF)	Joint Director, London (maternity leave from September 2014)
Dr Lisa Ford (LF)	Clinical Adviser, Liverpool
Mary Gawthrop (MG)	Specialist Nurse Adviser, London
Yetunde Ibitoye (YI)	Yellow Fever Programme Administrator, London
Daiga Jermacane (DJ)	Senior Information Analyst, London
Tania John (TJ)	Speciality Grade Doctor (from September 2014)
Linda Pang (LP)	Administrative Assistant, London
Dipti Patel (DP)	Joint Director, London
Geraldine Oliver (GO)	Service Manager, London
Hilary Simons (HS)	Senior Specialist Nurse, Liverpool
Alexandra Stillwell (AS)	Specialist Nurse Adviser, London
Rose Tucker (RT)	Specialist Nurse Adviser (Telephone Advice Line Service)



- i. Maternity leave from September 2014
- ii. From September and October 2014
- iii. From January 2015
- iv. LF Clinical supervision of DJ

= Senior Management Team

FINANCIAL REVIEW

The financial statements on page 8 covers the period from 1 April 2014 to 31 March 2015.

NaTHNaC receives operating funds from three sources:

- **Public Health England**

PHE provides core funding for NaTHNaC on an annual basis, and commissions NaTHNaC to carry out its work, including its programme for Yellow Fever Vaccination Centres (YFVCs). NaTHNaC is hosted by the UCLH NHS Foundation Trust and its headquarters are at 250 Euston Road, London. All monies received from PHE are administered through the Trust, and all London-based NaTHNaC personnel (with the exception of the Directors) are employed by the Trust. The Directors are employees of PHE, and Liverpool staff are employees of Liverpool School of Tropical Medicine.

- **The yellow fever vaccination programme**

This comprises both YFVC registration fees and training fees. Registration fees from YFVCs are assigned to the year of receipt and the subsequent year depending upon the period of registration of the individual centre (YFVCs have the option of registering for one or two years).

Yellow fever training programme fees are targeted to recover costs and may be carried over into subsequent years.

- **Other income**

NaTHNaC has a few additional income streams including, International Certificates of Vaccination or Prophylaxis, travel health training and provision of data feeds. These contribute a small amount to the operating budget.

Expenditure is divided between the two sites where NaTHNaC operates: the UCLH NHS Foundation Trust in London and the Liverpool School of Tropical Medicine.

NaTHNaC Financial Report			2014/15	
INCOME			£	£
	Annual Funding (PHE)		316,000	
	C/F Registration Fees - released		271,926	
	Registration Fees		210,433	
	Training Fees		263,970	
	Other Income		34,500	
	TOTAL INCOME			1,096,829
EXPENDITURE				
	Pay	UCLH	374,765	
		LSTM	83,718	
				458,483
	Training Costs		10,688	
	Rent, Rates and Utilities		23,311	
	General Expenditure		272,184	
				306,183
	TOTAL EXPENDITURE			764,666
	OPERATING PROFIT / LOSS			332,163
	Prior Year PHE Contribution		0	
	SURPLUS / (DEFICIT)			332,163
	Surplus Carried forward		(204,913)	
	Registration Fees carried forward to future years		(112,426)	
	Mat leave income to cover future costs		(15,000)	
	Total Income carried forward			(332,339)
	Bottom Line			(176)
	Surplus Carried forward		0	
	Registration Fees carried forward to future years		(99,725)	
	Mat leave income to cover future costs		0	
	Prior Year Income (to Cover Prior Year Costs)		0	

Notes/Assumptions

- £271,926 of registration income has been released into this year's position on the basis that it related to 14/15
- Liverpool School of Tropical Medicine overheads are charged at 25% costs
- UCLH overheads are charged at £3,642 per month

In 2014-2015 NaTHNaC generated a surplus of £322,163. This surplus is available for future use within the service.

NaTHNaC also carried forward £99,725 of registration fees that relate to future periods.

The main sources of funding for NaTHNaC are through PHE, registration and training fees.

OPERATIONS

This section reviews NaTHNaC's five key service areas, describing how they helped meet our core objectives for 2014 - 2015, and achieve the goal of "Protecting the Health of British Travellers".

Key Service Areas

1. Communication and information services
2. International health surveillance
3. Partnerships and collaborations
4. Telephone advice line service
5. Yellow fever vaccination programme

Core Objectives

1. Develop consistent and authoritative national guidance on general health matters for health professionals advising the public travelling abroad, and to disseminate this information widely.
2. Provide guidance on specific situations relating to the health of travellers.
3. Carry out surveillance of infectious and non-infectious hazards abroad, producing accessible regular outputs of such surveillance.
4. Administer the Yellow Fever Vaccination Centres (YFVCs).
5. Engage the major stakeholders concerned with travel health especially the travel industry, insurance industry and government bodies, to assist in sentinel surveillance and to engage in constructive dialogue towards a unified approach.
6. Facilitate, in collaboration with other training providers, the training of health care and other personnel in the provision of best quality travel health advice, based on such evidence as is available.
7. To define short-term and long-term research priorities in relation to travel medicine.

KEY SERVICE AREA	ORGANISATIONAL ACHIEVEMENTS	CORE OBJECTIVE
<p>Communication and information services</p> <p>Website: Dynamic, evidence-based information for health professionals and travellers</p> <p>Social media</p> <p>Press releases</p> <p>National guidance</p>	<p>In 2014 - 2015, there were 1.6 million visitors to the NaTHNaC website, an increase of nearly 17% from 2013 - 2014. Page views also increased to 5.9 million, an increase of 11%. The website was viewed by 901,514 users (an increase of 22%), and 44% of visitors came to the site for the first time. Thailand, India and Mexico were the country pages most frequently visited.</p> <p>NaTHNaC posted 110 Clinical Updates and News items which described global health events of importance to British travellers with recommendations as to how to mitigate those risks. The most popular Updates were <i>Ebola virus disease in West Africa</i>, <i>Chikungunya in Caribbean</i> and <i>Polio requirements for Pakistan</i>.</p> <p>NaTHNaC's Twitter page was established late 2009. In 2014 - 2015, 290 "tweets" were issued. At the end of 2014 - 2015, NaTHNaC had 1,861 followers (an increase of 57% on 2013 - 2014). In 2014 - 2015 NaTHNaC's Facebook page achieved 441 likes (an increase of 74%) and added 59 posts.</p> <p>During 2014-2015 NaTHNaC in collaboration with PHE produced ten press releases and three factsheets</p> <p>NaTHNaC are members of, and contributed to guidance produced by, the travel sub-group of the Joint Committee on Vaccination and Immunisation (JCVI), and Advisory Committee on Malaria Prevention (ACMP).</p>	<p>1, 2, 3</p> <p>1,2,3</p> <p>1, 2</p> <p>1</p>

<p>International health surveillance</p> <p>Identification and reporting of health events of importance to British travellers</p>	<p>In 2014 - 2015 NaTHNaC reported on in excess of 1000 global health events assessed as being of importance to British travellers on our publically available Outbreak Surveillance Database (OSD).</p> <p>During 2014 - 2015, a review of the worldwide epidemiology of six diseases was completed, in consultation with disease experts from PHE, and country-specific recommendations updated.</p>	<p>1, 2, 3</p> <p>1, 3, 5</p>
<p>Partnerships and collaborations</p>	<p>NaTHNaC fostered its relationship with other national and international travel health organisations including Public Health England, Health Protection Scotland, US Centers for Disease Control, European Centre for Disease Prevention and Control, Public Health Agency of Canada, and World Health Organization.</p> <p>NaTHNaC has continued its collaboration with MIMS to produce its 'Vaccination and malaria prophylaxis recommendations for travellers'.</p> <p>NaTHNaC has also continued its partnership with the Royal Society of Hygiene and Tropical Medicine to deliver a travel medicine study day in summer 2014.</p> <p>NaTHNaC strengthened its relationship with key stakeholders who also communicate with the British travelling public, in particular the Foreign and Commonwealth Office (FCO) and the Association of British Travel Agents (ABTA).</p> <p>NaTHNaC developed a relationship with reputable media companies and featured in several articles in the press.</p>	<p>1,7</p> <p>1</p> <p>6</p> <p>5</p> <p>1</p>

<p>Telephone advice line service</p> <p>Offering support to health professionals who are consulting with complex travellers.</p>	<p>From 1 April 2014 to 20 March 2015, NaTHNaC specialist nurses in travel health answered 6,770 calls on the national telephone advice line. A number of callers were unable to get through to our adviser; a review of our call handling is on-going with the aim of improving this service for users.</p>	<p>1,2</p>
<p>Yellow fever vaccination programme</p> <p>Registration, clinical standards, training and audit.</p>	<p>In 2014-2015, 3,574 Yellow Fever Vaccination Centres (YFVCs) in England, Wales and Northern Ireland were registered by NaTHNaC; 284 of these were new centres.</p> <p>In 2014-2015, 2,687 YFVCs received training; 16 classroom training days (attended by 534 health professionals) were held at venues in Liverpool and London, and a total of 1,977 health professionals had completed the on-line training.</p>	<p>1, 2, 4, 6</p> <p>2, 4, 6</p>

Team Achievements for 2014 - 2015:

Key: LB - Lynda Bramham	DJ - Daiga Jermacane
WE – Will Elson	TJ – Tania John
VF - Vanessa Field	DP – Dipti Patel
LF - Lisa Ford	HS - Hilary Simons
MG - Mary Gawthrop	AS - Alexandra Stillwell

A. Honours and Distinctions	
Fellowship of Royal College of Physicians (FRCP)	DP
A. Professional Activities	
<i>International Society of Travel Medicine (ISTM)</i> Member, Continuous Professional Development (CPD) Committee Member, CPD and Publications Committees Council Member, Nurse Professional Group	HS VF HS
<i>6th Northern European Conference on Travel Medicine. London (September 2014-current)</i> Member, Steering Committee Member, Local Organising Committee Chair, Scientific Committee Member, Scientific Committee	DP DP DP HS
<i>Department of Health, Joint Committee on Vaccination and Immunisation</i> Observer	VF DP
<i>PHE Advisory Committee on Malaria Prevention</i> Member	VF DP
<i>Liverpool School of Tropical Medicine</i> Internal Examiner, Diploma in Tropical Nursing	HS
<i>Centre for Occupational and Environmental Health, Manchester University</i> Honorary Lecturer	DP
<i>Travel Medicine and Infectious Diseases</i> Editorial Board Member	VF
<i>World Health Organisation</i> Roster of Experts in Travel Medicine	VF

B. Publications	
Journal Publications	
Patel D. Trip adviser – pre-travel risk assessment. Health and Safety at Work. June 2014.	DP
Patel D. How to avoid travel risks. Occupational Health 66.6 (Jun 2014): 23-25.	DP
Cunningham J, Horsley J, Patel D , Turnbull A, Laloo D. Compliance with long-term malaria prophylaxis in British expatriates. <i>Travel Med Infect Dis</i> 2014; 12(4): 341 – 348.	DP
Gawthrop M. Prescribing malaria chemoprophylaxis. Nurse Prescribing: Vol. 12. No.9. September 2014.	MG
Dunn R, Williams R, Kemp V. Patel D , Greenberg G. Systematic review: deployment length and the mental health of diplomats. <i>Occup Med</i> 2015; 65 (1): 32-38.	DP
Gawthrop M. Travel health resources for practice nurses. Practice Nursing Vol. 25 No.12, December 2014.	MG
Gawthrop M. Ebola advice and safety. Nursing in Practice: No 81, December 2014.	MG
Bramham L. Rabies: How can we protect travellers - Practice Nursing 2015, Vol 26, No 1.	LB
Patel D, Jermacane D. Social media in travel medicine: A review. <i>Travel Med Infect Dis</i> 2015; 13(2): 135-142.	DJ, DP
Book Chapters	
Simons HJ. Risk Assessing for Vaccine Administration In: Shaw M, Wong C (Eds.). The Practical Compendium of Immunisations for International Travel. Switzerland. Adis. 2015	HS
C. Invited Speaker Lectures	
Update on International Travel Recommendations. Asia Pacific Travel Medicine Conference, Ho Chi Minh City, Vietnam. 8 May 2014	DP
Challenges of supporting those who travel for work. Asia Pacific Travel Medicine conference, Ho Chi Minh City, Vietnam. 10 May 2014	DP
Wessex Royal College of General Practice Travel Medicine Study Day, Southampton. 13 May 2014	LB
Use of social media in travel medicine. 5 th North European Conference in Travel Medicine, Bergen, Norway. June 2014	DP
Objective Structured Knowledge Exchange: Yellow fever. 5 th Northern European Conference on Travel Medicine, Bergen, Norway. 8 th June 2014.	MG
Objective Structured Knowledge Exchange: Medico-legal issues in Travel Medicine. North European Conference in travel Medicine, Bergen, Norway. June 2014	DP
Supporting a global Work force. Institute of Occupational Safety and Health Annual Conference, London. 17 June 2014	DP

UK Vaccination Programme. Developments in Travel Medicine. National Travel Health Network and Centre with Royal Society of Tropical Medicine and Hygiene, Liverpool. 25 June 2014	LF
Yellow fever – challenges for the health professional. Developments in Travel Medicine. National Travel Health Network and Centre with Royal Society of Tropical Medicine and Hygiene, Liverpool. 25 June 2014	HS
Overseas deployments – the challenges of supporting the worker and their family. Society of Occupational Medicine Annual Scientific Meeting, Nottingham. 2 July 2014	DP
Travel health top tips. Educational Seminar Hospital for Tropical Diseases, London. 18 September 2014	LB
What's new? MASTA study Day, London. 7 November 2014.	LB
Medico-legal aspects. Short Course in Travel Medicine, London School of Hygiene and Tropical Medicine, London. 10 November 2014	DP
Information sources in Travel Medicine. Short Course in Travel Medicine, London School of Hygiene and Tropical Medicine, London. 11 November 2014	DP
Preparing the complex traveller. Federation of Infection Societies Conference, Harrogate. November 25 2014	LB
Travel Health Update. Nursing in Practice. Cardiff. 25 November 2014.	HS
An Introduction to Travel Medicine. Travel Medicine Study Day for London SpRs in Infectious Disease, London. 26 November 2014	DP
Yellow fever. Travel medicine Study Day for London SpRs in Infectious Disease, London. 26 November 2014	HS
Case studies. Travel Medicine Study Day for London SpRs in Infectious Disease, London. 26 November 2014	TJ, HS
Looking after number one. Diploma of Tropical Nursing, Liverpool School of Tropical Medicine, Liverpool. December 2014	HS
Travel Health Update. Nursing In Practice, Liverpool. 3 February 2015	HS
The backpacker. Travel Health and Expedition Medicine Course, Liverpool School of Tropical Medicine, Liverpool. 10 February 2015.	HS
Travel vaccines and the diseases they prevent, Travel Health and Expedition Medicine Course, Liverpool School of Tropical Medicine, Liverpool. 10 February 2015.	HS
Travel vaccines and the diseases they prevent, Travel Health and Expedition Medicine Course, Liverpool School of Tropical Medicine, Liverpool. 10 February 2015.	LF
Travel Health Scenarios. Travel Health and Expedition Medicine Course, Liverpool School of Tropical Medicine, Liverpool. 10 and 11 February 2015.	LF
Complicated Travellers. Travel Health and Expedition Medicine Course, Liverpool School of Tropical Medicine, Liverpool. 11 February 2015.	LF
Pre-travel consultation in the digital age. Advancing Travel Health in Oman Conference, Muscat, Oman. 14 February 2015	DP
Chronic illness and the traveller. Advancing Travel Health in Oman Conference, Muscat, Oman. 15 February 2015	DP

Setting up a surveillance system for travel related illnesses. Advancing Travel Health in Oman Conference, Muscat, Oman. 15 February 2015	DP
Update: Travel Health. Liverpool Community Health, Liverpool. 26 February, 2015.	HS
Current Alerts in Travel Medicine. Travel medicine beyond vaccinations - Royal Pharmaceutical Society, London. 12 March 2015	DP
What happens to travellers when they are away - experience at the CIWEC clinic Nepal. Travel medicine beyond vaccinations - Royal Pharmaceutical Society, London. 12 March 2015	WE
Health considerations for humanitarian workers. Health and Wellbeing at Work 2015, Birmingham. 3 March 2015	DP
Travel medicine and expatriate health. National Conference for SpRs in Occupational Medicine, Oxford. 17 March 2015	DP
The Gap Year Traveller. British Global and Travel Health Association In association with The Royal College of Physicians and Surgeons of Glasgow Annual Conference, Leicester. 28 March 2015. .	TJ
D. Education and Training	
London School of Hygiene and Tropical Medicine <ul style="list-style-type: none"> Lecturer, Short Course in Travel Medicine 	DP
Liverpool School of Tropical Medicine <ul style="list-style-type: none"> Lecturers, Diploma in Tropical Nursing Lecturer, Travel and Expedition Medicine Course organiser and lecturer, Travel and Expedition Medicine 	LF, HS HS LF
Manchester University <ul style="list-style-type: none"> Lecturer, Tutor, and Supervisor, MSc Occupational Medicine 	DP
Yellow Fever Vaccination Centre Training Seminars, England, Wales and Northern Ireland	LB, MG HS AS

Operational Highlights from 2014 - 2015



APRIL

To coincide with World Malaria Day, NaTHNaC highlights the publication of the 2013 PHE report on malaria imported into the United Kingdom, and reminds travellers of the importance of seeking pre-travel medical advice and adhering to the ABCD of malaria prevention.

April also sees a revision of NaTHNaC's meningococcal disease vaccine recommendations following a review of worldwide epidemiology with PHE.

NaTHNaC reports on an ongoing outbreak of Ebola virus disease (EVD) in Guinea, Liberia and Sierra Leone.

Dipti Patel participates in a webchat as part of the Foreign & Commonwealth Office *Be on the ball* campaign for the FIFA world cup in Brazil.



MAY

Following new guidelines provided by the Joint Committee on Vaccination and Immunisation (JCVI)

travel subcommittee NaTHNaC updates its guidance to Yellow Fever Vaccination Centres on the interpretation of this advice and its implications for travellers.

May also sees a revision of NaTHNaC's country information pages for schistosomiasis, following a review of the worldwide epidemiology with PHE.

Dr Vanessa Field and Dipti Patel take part in a UCLH webchat: *the FIFA World Cup Q&A*.

Dipti Patel is a speaker at the Asia Pacific Travel Medicine Conference, in Ho Chi Minh City, Vietnam.



JUNE

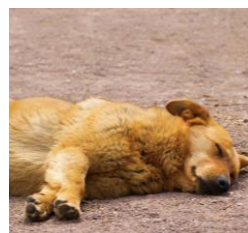
In partnership with the Royal Society of Tropical Medicine and Hygiene, NaTHNaC hosts a conference on *Developments in Travel Medicine* in Liverpool. Hilary Simons and Lisa Ford are speakers.

June also sees a change in the NaTHNaC health professional telephone advice line hours following a service review.

Following new recommendations from the World Health Organisation (WHO), NaTHNaC updates its country yellow fever vaccination recommendations and requirements.

NaTHNaC highlights a number of important travel related issues ranging from the advice for Hajj and Umrah pilgrims, sarcocystosis in travellers to Malaysia, locally acquired malaria in Egypt, EVD, chikungunya virus in the Caribbean, and dengue in Africa.

Mary Gawthrop and Dipti Patel are speakers at the 5th North European Conference in Travel Medicine in Bergen, Norway.



JULY

NaTHNaC highlights the publication of of PHE's Advisory Committee on Malaria Prevention updated guidelines on malaria prevention in travellers.

July also sees a revision of NaTHNaC's rabies and hepatitis B vaccine recommendations following a review of worldwide epidemiology with PHE.

PHE and NaTHNaC report that EVD cases in West Africa continue to rise, produce a joint press release on dengue and chikungunya annual data, and publish a factsheet on summer travel in anticipation of the start of the summer school holiday.

NaTHNaC is quoted in a Daily Mail article on dengue.



AUGUST

August sees NaTHNaC highlight the WHO announcement that the

EVD outbreak in Guinea, Liberia and Sierra Leone is a Public Health Emergency of International Concern.

NaTHNaC completes an internal audit of the telephone advice line calls

NaTHNaC also reports on a locally acquired dengue case in department of the Var, France.



SEPTEMBER

NaTHNaC and PHE remind people travelling to Saudi Arabia for the annual Hajj pilgrimage to

seek health advice before making the journey.

With PHE, NaTHNaC issues further advice for travellers from England, Wales and Northern Ireland to countries exporting wild polio virus or countries infected, but not exporting wild polio virus.

September sees NaTHNaC draw attention to the risk of mosquito and tick borne diseases in the USA and report on the continuing spread of chikungunya in the Americas and the Caribbean.

Lynda Bramham presents at a Migrant Health Seminar organised by the Hospital of Tropical Diseases at the Royal College of General Practitioners in London.

Dr Tania John joins the NaTHNaC team as a speciality grade doctor.



OCTOBER

NaTHNaC highlights the revised PHE guidelines on administration of more than one live vaccine.

NaTHNaC and PHE produce a fact sheet for travellers planning to travel to South Asia for Diwali.

October also sees NaTHNaC report on Marburg virus disease in Uganda.

Dr William Elson joins the NaTHNaC team as a speciality grade doctor.



NOVEMBER

Following an update of guidance from the JCVI on typhoid boosters, NaTHNaC publishes

guidance on the implications for clinical practice.

NaTHNaC hosts a travel medicine session at the Federation of Infection Societies Conference in Harrogate, and helps run the first travel medicine study day for London wide Specialist Registrars in infectious diseases

NaTHNaC highlights a number of important travel related outbreaks including the rising number of travel associated cases of chikungunya in the Americas and Caribbean, plague in Madagascar, and H7N9 avian influenza in China.

Hilary Simons presents at the Nursing in Practice Conference in Cardiff, and Lynda Bramham presents at the MASTA Study Day and the Federation of Infection Societies Conference.



DECEMBER

NaTHNaC reminds travellers of the risk of insect and tick borne disease in Europe.

With PHE, NaTHNaC publish a health and safety factsheet for UK travellers planning a winter cruise.

NaTHNaC reports on the first human case of West Nile virus in Brazil, and continues to highlight the ongoing outbreak of EVD in West Africa, and the MERS-CoV situation in the Middle East.

Hilary Simons presents on the Diploma of Tropical Nursing Course at the Liverpool School of Tropical Medicine.



JANUARY

NaTHNaC updates its guidance on pregnancy and travel, and advises health professionals on the discontinuation of

chloroquine syrup.

NaTHNaC alerts travellers to the risk of mosquito borne diseases in Australia.

Emily Aidoo joins NaTHNaC as operations and project manager.



FEBRUARY

NaTHNaC reminds travellers of important changes to yellow fever certificate requirements for South Africa.

NaTHNaC and PHE produce a fact sheet for travellers planning to travel celebrate the Chinese New Year.

NaTHNaC also reports on the first cases of imported human influenza A (H7N9) infection in North America, and continues to report on the worldwide pertussis and measles situation.

Hilary Simons and Lisa Ford present on the Travel Health and Expedition Medicine Course, Liverpool School of Tropical Medicine. Dipti Patel presents at the Advancing Travel Health in Oman Conference in Muscat.



MARCH

NaTHNaC reports on human infections with avian influenza worldwide, and highlights the increased seasonal

influenza A H1N1 activity in India.

Dipti Patel presents at Health and Wellbeing at Work 2014 Conference in Birmingham, Tania John presents at the BGTHA/FTM conference on The Adventurous Traveller, and Dipti Patel and Will Elson Present at the joint Royal Pharmaceutical Society and Faculty of Travel Medicine Conference in London; Travel Medicine – Beyond Vaccines.

NaTHNaC thanks our partner organisations for their support, expertise and commitment to '*Protecting the Health of British Travellers*'.

Department of Health
www.dh.gov.uk

Liverpool School of Tropical Medicine
www.liv.ac.uk/lstm

London School of Hygiene and Tropical Medicine
www.lshtm.ac.uk

Public Health England
<https://www.gov.uk/government/organisations/public-health-england>

The Hospital for Tropical Diseases
www.thehtd.org

University College London Hospital NHS Foundation Trust
www.uclh.nhs.uk

National Travel Health Network and Centre (NaTHNaC)
UCLH NHS Foundation Trust
3rd Floor Central
250 Euston Road
London NW1 2PG
www.nathnac.org



University College London Hospitals **NHS**
NHS Foundation Trust

*NaTHNaC – Leading the Way in
Travel Health*