



NaTHNaC

Annual Report

2019-2020



CONTENTS

OVERVIEW.....3

Chair and Director's Statement

GOVERNANCE.....4

NaTHNaC Technical Advisory Group (TAG)

NaTHNaC Senior Management Team (SMT)

NaTHNaC Team

FINANCIAL REVIEW.....8

NaTHNaC Financial Report

OPERATIONS.....10

Key Service Areas

Core Objectives

Team Achievements for 2019-2020

OVERVIEW

Statement from the Chair

The escalation of the COVID-19 outbreak coincided with my first three months as Chair of the National Travel Health Network and Centre (NaTHNaC) Technical Advisory Group (TAG), and the COVID-19 pandemic ensured that this reporting year ended in the most extraordinary way.

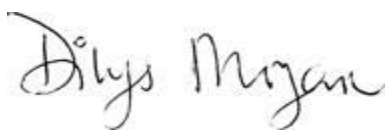
Rima Makarem had been Chair of the TAG since 2015 and she had set a very high standard for me to follow. We would therefore like to thank Rima for the past four years as an excellent chair, and the NaTHNaC team whose dedication, hard work and support have not only made my task much easier but also ensured another successful year for NaTHNaC. The Team has had to cope with the disruption to their working practices during a period of increasing demands on their time and expertise. Their many achievements in Protecting the Health of British Travellers can be found in this report.

The increase in use of the services provided by NaTHNaC are, again this year, reflected in the rise in the number of page views to the TravelHealthPro website. Page views increased from around 10.5 million during 2018/19 to almost 12.4 million views this year – including the greatest single day number of views recorded at almost 250,000 on 12 March 2020. NaTHNaC responded to the increasing demand by rapidly adding a COVID-19 resource section. All other indicators of the recognition of NaTHNaC as the go-to place for travel advice, including the number of Facebook and Twitter followers, also increased during the year.

Under business as usual, NaTHNaC is responsible for the registration, clinical standards, training and audit of the Yellow Fever Vaccination Centres (YFVCs). The number of registered YFVCs decreased during the year reflecting a change in the yellow fever (YF) vaccination schedule and how these clinics are being organised. Classroom training for YFVCs stopped in March 2020 due to the COVID-19 pandemic, but prior to this, 416 health professionals had attended YF vaccination training days. In addition, 1,385 health professionals purchased the YF e-learning between 1 April 2019 and 31 March 2020, and 99.3% of these passed the completion test.

We would also like to thank the continuing support of our commissioners Public Health England (PHE), hosts University College London Hospitals (UCLH), and partners on NaTHNaC's Technical Advisory Group.

We hope this year will be less eventful, but we will continue to develop our services to meet the changing demands, challenges and expectations of British travellers.



Professor Dilys Morgan

GOVERNANCE

NaTHNaC was created by the Department of Health in 2002. We are now commissioned by the Public Health England (PHE) and work in partnership with our network founders:

- The Hospital for Tropical Diseases
- Liverpool School of Tropical Medicine
- London School of Hygiene and Tropical Medicine
- Public Health England
- University College London Hospital (UCLH) NHS Foundation Trust

NaTHNaC's broad aim is to protect the health of the British traveller, and it does this by providing evidence-based advice and information to health professionals, travellers, the travel industry and national government, as well as training for health professionals and the travel industry.

NaTHNaC Technical Advisory Group

The NaTHNaC Technical Advisory Group (TAG) was formed in April 2014 and has representation from each of the NaTHNaC partners plus PHE, UCLH NHS Foundation Trust and the Department of Health. NaTHNaC is grateful for the support of each member organisation.

Technical Advisory Group Members:

Dr Nick Beeching	Liverpool School of Tropical Medicine
Dr Michael Brown	University College London Hospitals NHS Foundation Trust
Dr Joanne Cayford	BBC (observer)
Dr Vanessa Field	NaTHNaC
Prof David Laloo	Liverpool School of Tropical Medicine
Prof James Logan	London School of Hygiene and Tropical Medicine
Dr Nicky Longley	Hospital for Tropical Diseases
Dr Rima Makarem	Chair (to December 2019)
Prof Dilys Morgan	Chair (from January 2020)
Dr Dipti Patel	NaTHNaC
Prof Nick Phin	Public Health England
Ms Melanie Watts	University College London Hospitals NHS Foundation Trust (to December 2019)
Dr Fiona Yung	University College London Hospitals NHS Foundation Trust (from January 2020)

NaTHNaC Senior Management Team (SMT)

The current NaTHNaC SMT was established in June 2012. The NaTHNaC SMT consists of the director, deputy director, operations manager, senior nurse and clinical adviser. It is chaired by the director and meets on a quarterly basis. The SMT is responsible for the strategic and operational

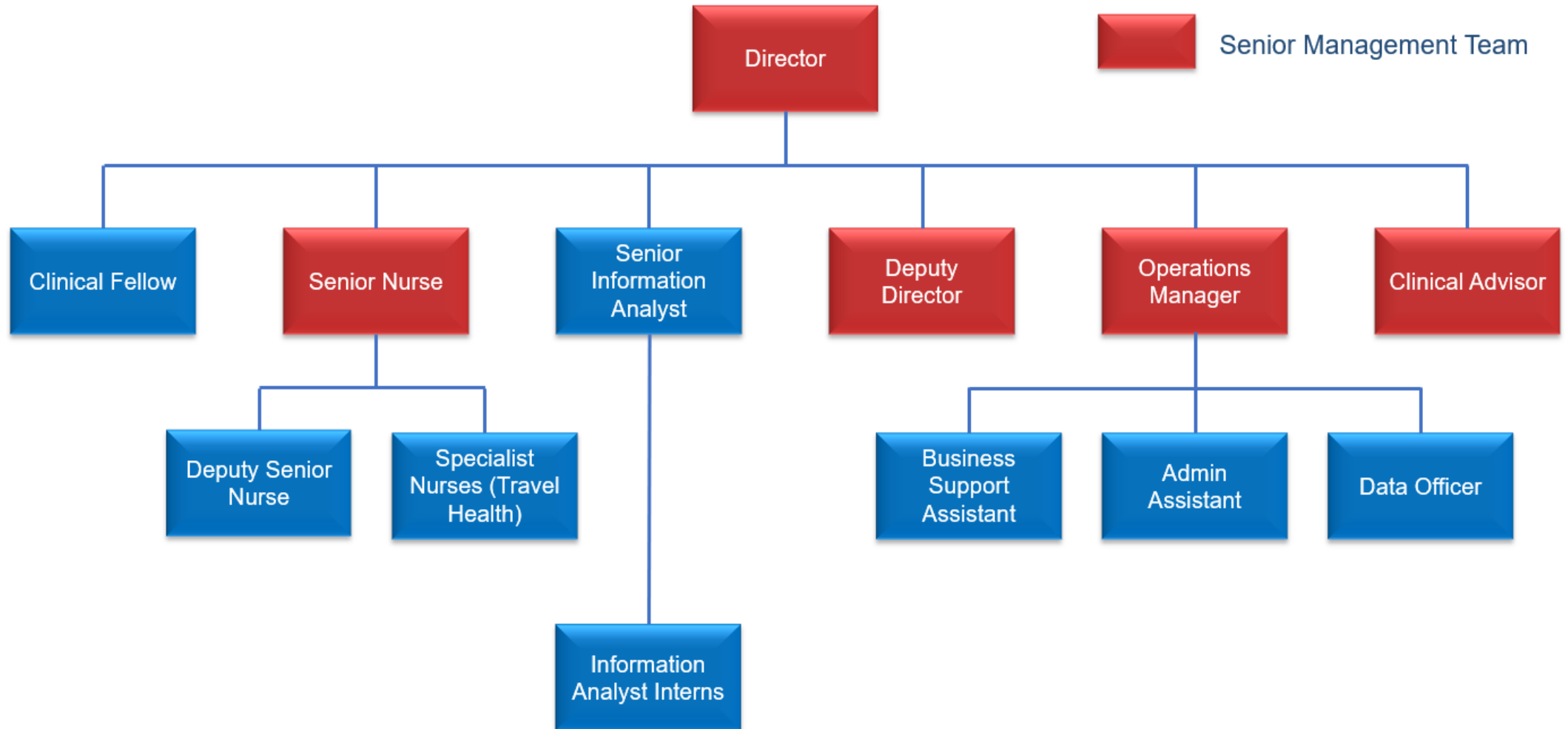
management of NaTHNaC and implementing any policies and strategies as agreed by the Technical Advisory Group.

NaTHNaC Team

NaTHNaC's expertise is provided by 17 staff and has two bases in London and Liverpool. Staff include doctors, nurses, an information analyst and administrators (see organogram on page 6).

Lynda Bramham (LB)	Specialist Nurse Adviser, Sheffield
Terence Corrigan (TC)	Online Communications & Development/Data Officer, London
Anisha Desai (AD)	Information Analyst Intern, London (from January 2020)
Gareth Egerton (GE)	Information Analyst Intern, London (from February 2020)
Dr Vanessa Field (VF)	Deputy Director, London
Rachael Fletcher (RF)	Specialist Nurse Adviser, London
Dr Lisa Ford (LF)	Clinical Adviser, Liverpool
Mary Gawthrop (MG)	Specialist Nurse Adviser, London
Zaina Hanif (ZH)	Business Support Assistant, London
Sanch Kanagarajah (SK)	Senior Information Analyst, London
Dr Kirsten MacGregor (KM)	Clinical Fellow, London (from September 2019)
Masum Miah (MM)	Operations Manager, London
Linda Pang (LP)	Administrative Assistant, London
Dr Dipti Patel (DP)	Director, London
Hilary Simons (HS)	Senior Specialist Nurse, Liverpool
Alexandra Stillwell (AS)	Specialist Nurse Adviser, London
Rose Tucker (RT)	Specialist Nurse Adviser, Derbyshire

NaTHNaC Organogram



FINANCIAL REVIEW

The financial statement covers the period from 1 April 2019 to 31 March 2020.

NaTHNaC receives operating fund from three sources:

1. Public Health England

PHE provides core funding for NaTHNaC on an annual basis, and commissions NaTHNaC to carry out its work, including the programme for Yellow Fever Vaccination Centres (YFVCs). NaTHNaC is hosted by the UCLH NHS Foundation Trust and its headquarters are at 250 Euston Road, London. All monies received from PHE are administered through the Trust, and all London-based NaTHNaC personnel (with the exception of the Directors) are employed by the Trust. The Directors are employees of PHE, and Liverpool staff are employees of Liverpool School of Tropical Medicine.

2. The Yellow Fever Vaccination Programme

Income from the yellow fever programme comprises both YFVC registration fees and training fees. Registration fees from YFVCs are assigned to the year of receipt and the subsequent year depending upon the period of registration of the individual centre (YFVCs have the option of registering for one or two years).

Yellow fever training programme fees are targeted to recover costs and may be carried over into subsequent years.

3. Other Income

NaTHNaC has additional income streams including provision of data feeds and training (non-yellow fever). These contribute a small amount to the operating budget.

Expenditure is divided between the two sites where NaTHNaC operates: the UCLH NHS Foundation Trust in London and the Liverpool School of Tropical Medicine.

NaTHNaC Financial Report

2019/20

INCOME		£	£
	Annual Funding (PHE)		266,960
	Registration Fees - released & collected		613,086
	Training Fees		240,765
	Other Income		26,938
	TOTAL INCOME		1,147,749
EXPENDITURE			
	Pay	UCLH	385,365
		LSTM	111,715
			497,080
	Training Costs		1,977
	Rent, Rates and Utilities		28,510
	General Expenditure		251,398
			281,885
	TOTAL EXPENDITURE		778,965
	OPERATING PROFIT / LOSS		368,784
	Prior Year PHE Contribution		0
	SURPLUS / (DEFICIT)		368,784
	Surplus Carried forward		55,448
	Registration Fees carried forward to future years		313,336
	Mat leave income to cover future costs		0
	Total Income carried forward		368,784

Notes/Assumptions

- *Registration fees carried forward related to cash received for registrations relating to future years*
- *Liverpool School of Tropical Medicine overheads are charged at 25% costs*
- *UCLH overheads are charged at 15% of PHE income plus partial accommodation costs.*

OPERATIONS

This section reviews NaTHNaC's five key service areas, describing how they helped meet our core objectives for 2019 – 2020, and achieve the broad aim of “**Protecting the Health of British Travellers**”.

Operations were significantly impacted by the COVID-19 pandemic. The whole NaTHNaC team moved to remote working during the week of the 20th March. Further information on NaTHNaC's role in the pandemic response is provided below.

Key Service Areas

1. Communication and information services
2. International health surveillance
3. Partnerships and collaboration
4. Telephone advice line service
5. Yellow fever vaccination programme

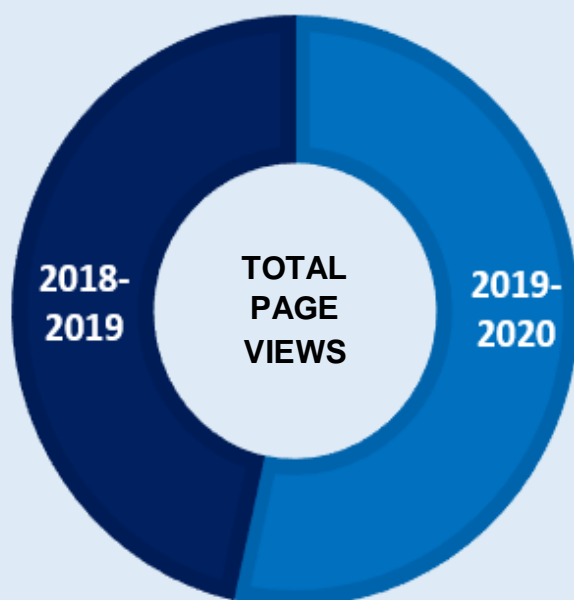
Core Objectives

1. Develop consistent and authoritative national guidance on general health matters for health professionals advising the public travelling abroad, and to disseminate this information widely.
2. Provide guidance on specific situations relating to the health of travellers.
3. Carry out surveillance of infectious and non-infectious hazards abroad, producing accessible regular outputs of such surveillance.
4. Administer Yellow Fever Vaccination Centres (YFVCs) in England, Wales and Northern Ireland (EWNI)
5. Engage the major stakeholders concerned with travel health, especially the travel industry, insurance industry and government bodies, to assist in sentinel surveillance and to engage in constructive dialogue towards a unified approach
6. Facilitate, in collaboration with other training providers, the training of health care and other personnel in the provision of best quality travel health advice, based on such evidence as is available.
7. To define short-term and long-term research priorities in relation to travel medicine

ORGANISATIONAL ACHIEVEMENTS

1. Communication and information services (core objective: 1,2,3,5,7)

Website: Dynamic, evidence-based information for health professionals and travellers



Between April 1st 2019 and March 31st 2020, the total number of page views to the TravelHealthPro website was **12,384,738** (an increase from **10,756,263** in 2018-2019).

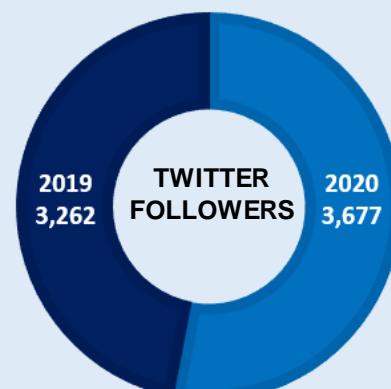
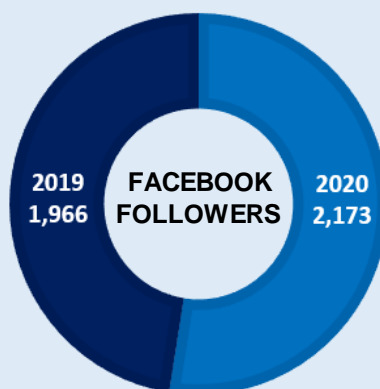
The Top 10 most popular pages included country information pages for Thailand, India, Mexico, Vietnam, as well as factsheets on insect and tick bite avoidance, and 6 news items for COVID-19.

The highest number of page views for a single day was 249,279 on 12 March 2020 due to COVID-19

The range of topics covered on TravelHealthPro was expanded to include more special risk traveller factsheets, and a COVID-19 resource section.

Social Media

NaTHNaC's Twitter and Facebook pages continue to attract more followers. By 30 April 2020 NaTHNaC had 3,677 Twitter followers (an increase from 3,262 in June 2019) and 2,173 followers on Facebook (an increase from 1,966 in June 2019).



2. International health surveillance (core objectives: 1,2,3,5,7)

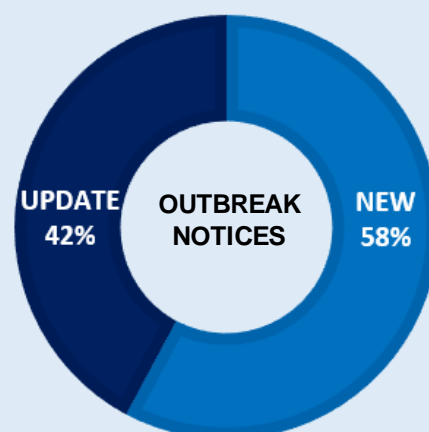
Identification and reporting of health events of importance to British travellers

104

NEWS ITEMS

NaTHNaC posted 104 news items which described global health events of importance to British travellers with recommendations as to how to mitigate those risk. This included 6 news items and 299 outbreak surveillance updates for COVID-19

A total of 560 outbreak notices were entered on NaTHNaC's outbreak surveillance database during 2019-2020. Of these 236 (42%) were updates to existing outbreak notices. The most commonly reported diseases were COVID-19, Ebola Virus Disease, polio, measles, and yellow fever



3. Partnerships and collaborations (core objectives: 5,6)

NaTHNaC collaborated again with the Public Health Forum of the Royal College of Nursing (RCN) to hold our third joint conference "Travel Health 2020"

NaTHNaC continues to work with the Liverpool School of Tropical Medicine to run the Professional Diploma in Travel Health.

NaTHNaC staff presented at 30 national and international conferences, study days and courses. Members of the team contributed to the scientific programmes for the 8th Northern European Conference on Travel Medicine and the Federation of Infection societies conference 2019.

NaTHNaC continue to work closely with the Foreign, Commonwealth and Development Office and Association of British Travel Agents to improve information to the British travelling public.

NaTHNaC currently license data to two commercial organisations.

4. Telephone advice line service (core objectives: 2,6,7)

Offering support to health professionals who are consulting with complex travellers

4938

CALLS

From 1 April 2019 to 31 March 2020, NaTHNaC specialist nurses answered 4938 calls on the national telephone advice line.

The electronic data entry system for advice line calls has been used to analyse and publish 6 papers and posters.

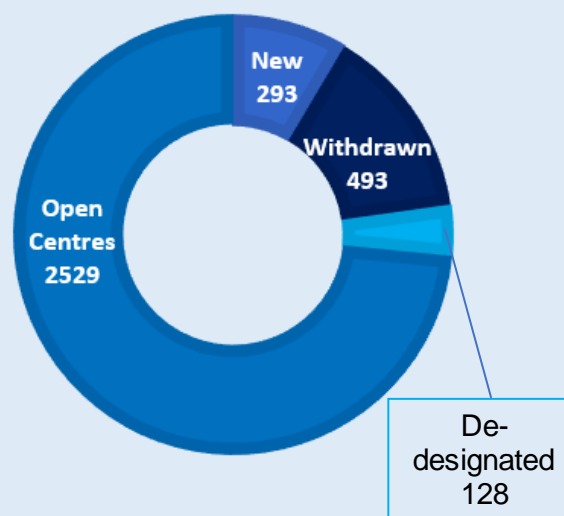
5. Yellow fever vaccination programme (core objectives: 1,2,4)

Registration, clinical standards, training and audit

NaTHNaC works with the Medicines and Healthcare products Regulatory Agency, Public Health England, vaccine manufacturers and distributors to ensure YFVCs are kept well informed and supported regarding YF vaccine supplies.

NaTHNaC monitors quality standard of YFVCs and works closely with various independent health care regulators in England, Wales and Northern Ireland.

In 2019-2020, there were a total of 2822 centres of which 293 were new centres. There were 493 YFVC that withdrew their YF registration; 128 were de-designated by NaTHNaC.



Thirteen classroom YF training days took place at two locations (Liverpool and London); 5 bespoke YF training days were commissioned. In total, classroom and bespoke YF training days attracted 416 health professionals. Between 1 April 2019 and 31 March 2020, a total of 1385 health professionals purchased the YF e-learning; 1375 passed the completion test. Due to the COVID-19 pandemic, classroom training was stopped in March 2020.

There was an 86.2% response rate from YFVC to the online Annual Return of YF vaccine use (compared to 93% in 2018, 86% in 2017 and 2016 and 80% in 2015).

6. COVID-19

NaTHNaC has been involved in the COVID-19 response since the original identification of a pneumonia of unknown aetiology in Wuhan City, Hubei Province of China. In the first three months of 2020, this included posting 4 news items on COVID-19, with 2 updates, and 203 outbreak surveillance entries, with 96 updates. Travel advice was changed for 14 countries before the global travel advisory was declared in March 2020.

Just before a national lockdown was implemented, NaTHNaC stopped all face-to-face courses and moved to remote working. All meetings have been virtual since March 2020.

Team Achievements for 2019 – 2020:

Key:

LB	Lynda Bramham	SK	Sanch Kanagarajah
VF	Vanessa Field	DP	Dipti Patel
RF	Rachael Fletcher	HS	Hilary Simons
LF	Lisa Ford	AS	Alexandra Stillwell
MG	Mary Gawthrop		

A. Honours, Awards and Distinctions

Liverpool School of Tropical Medicine. Mentor. Staff and Educational Development Association (SEDA). Professional Development Award – Student Mentor. September 2019	HS
--	----

B. Professional Activities

International

Euro Travnet <i>Board Member</i>	VF
GeoSentinel Tracking and Communications Working Group <i>Chair</i>	VF
International Society of Travel Medicine (ITSM) <i>Member, Continuous Professional Development Committee</i>	HS
<i>Member, Publications Committee</i>	VF
<i>Co-Director, Professional Education Committee</i>	DP
<i>Member, Travel for Work Special Interest Group</i>	DP
<i>Member, Digital Communications Committee</i>	VF DP
8 th Northern European Conference on Travel Medicine <i>Member, Steering Committee</i>	DP
<i>Member, Scientific Committee</i>	DP HS
Travel Medicine and Infectious Diseases <i>Assistant Editor</i>	DP
<i>Editorial Board</i>	VF

World Health Organisation	
<i>Guideline development group (GDG) for the revision of WHO International Travel Health</i>	DP
International Health Regulations (IHR) Emergency Committee for Polio	VF
<i>Roster of Experts in Travel Medicine</i>	VF DP
<i>Scientific and Technical Advisory Group on Geographical Yellow Fever Risk Mapping</i>	DP
National	
Department of Health, Joint Committee on Vaccination and Immunisation	
<i>Observer</i>	DP
Travel Subcommittee	
<i>Member</i>	VF DP
<i>Secretariat</i>	LB
PHE Advisory Committee on Malaria Prevention	
<i>Member</i>	VF DP
Association of British Tour Operators (ABTA) Destination Health and Safety, Public Health and Infrastructure Risk Management Collaborative Working Group	
<i>Member</i>	VF
Emporiatics, Faculty of Travel Medicine, Royal College Physicians and Surgeons of Glasgow	
<i>Editorial Board</i>	AS
Federation of Infection Societies (FIS) Conference 2019	
<i>Member, Scientific Committee</i>	DP
Imported Fever Service Governance Group	
<i>Chair</i>	DP
Royal College of Nursing Public Health Forum and NaTHNaC Conference 2020 – Travel Health 2020	
<i>Joint Organiser</i>	VF AS
Royal College of Physicians and Surgeons (Glasgow) Academy of Clinical Educators	
<i>Member</i>	AS
MoD Tropical Medicine Study Group	
<i>Member</i>	DP

UK Commission on Human Medicines: Expert Working Group (Yellow Fever) <i>Invited Expert</i>	DP HS
Liverpool School of Tropical Medicine. Diploma in Travel Health <i>Board of Examiners</i>	DP HS
Faculty of Occupational Medicine Ethics Committee <i>Member</i>	DP
Society of Occupational Medicine, Travel Medicine Special Interest Group <i>Chair</i>	DP
Centre of Occupational and Environmental Health, Manchester University <i>Honorary Lecturer</i>	DP
Occupational Medicine <i>Deputy Editor</i>	DP

C. Publications

Journal Articles

Kay, N., Ives, L., Petersen, J., Kanagarajah, S., Simons, H. and Patel, D., Pre-travel malaria enquiries to the United Kingdom national travel advice line 2016: Advice mainly needed on malaria maps and risk groups, <i>Travel Med. Infect. Dis.</i> , 2019 Jul-Aug, 30 , 73-107	SK DP HS
Schlagenhauf, P. and Patel, D., Who, Where, and Why: Moves to Checkmate Imported Malaria?, <i>Clinical Infectious Diseases</i> , 2019, 69(7) , 1163-1164	DP
Schlagenhauf, P., Grobusch, M.P., Leder, K., Toovey, S. and Patel, D., Complex choices: Which malaria chemoprophylaxis can be recommended for the pregnant traveller?. <i>Travel Med. Infect. Dis.</i> , 2019, 101525	DP
McCallum, A.D., Kanagarajah, S., Ford, L. and Patel, D., To err is human: Clinical incident calls to a national travel health advice line, <i>Vaccine</i> , 2019, 37(52) , 7535-7538	SK LF DP
Rodríguez-Morales, A.J., MacGregor, K., Kanagarajah, S., Patel, D. and Schlagenhauf, P., Going global – Travel and the 2019 novel coronavirus, <i>Travel Med. Infect. Dis.</i> , 2020, 33:101578 , doi:10.1016/j.tmaid.2020.101578	KM SK DP
Patel, D., Simons, H. and Schlagenhauf, P., The march of measles: can travel	DP HS

medicine halt the pace? <i>Travel Med. Infect. Dis.</i> , May-June 2020, 29 , 4-5	
Gautret, P., Leder, K., Field, V., Kain, K.C., Hamer, D.H. and Libman, M., GeoSentinel surveillance of travel-associated infections: What lies in the future? <i>Travel Med. Infect. Dis.</i> , 2020 Mar.	VF
Other	
Simons, H., Vaccination and Travel, Value of Vaccine Campaign, Media Planet, <i>New Scientist</i> , 27 June 2019	HS
Simons, H., Fletcher, R. and Russell, K., Rabies: an update for nurses in general practice, <i>Practice Nursing</i> , Dec 2019, 30(12) , 589-594	HS RF
Fletcher, R., Dengue Fever, <i>Primary Health Care</i> , 2019, 29(5) , 45-51	RF
Gawthrop, M., Guidelines for malaria prevention in travellers: what is new? <i>Practice Nursing</i> , January 2020, 31:2 , 18-20	MG
Bramham B., Going hiking and camping in Europe? Are you aware of tick-borne encephalitis? Value of Vaccines Campaign, Media Planet, <i>New Scientist</i> , 19 March 2020	LB
Chiodini, P.L., Patel, D., Whitty, C.J.M. and Laloo, D.G., Guidelines for malaria prevention in travellers from the United Kingdom, 2018. London: Public Health England; September 2019	DP

D. Abstracts and Presentations

Fadipe Y, Kanagarajah, S., Patel, D., Fadipe B. Nigeria bound travellers – what challenges healthcare professionals. Poster presented at <i>CISTM16</i> , Washington FC, June 2019	SK DP
Gnanadurai R., Campos-Mato I., Kanagarajah S., Simons H., Patel D., Review of Yellow Fever Vaccine Poor Practice Reports to a National Travel Health Body in the UK Poster presented at <i>CISTM16</i> , Washington FC, June 2019	SK DP HS
Khanna R., Kanagarajah, S., Ford L. and Patel, D. Pre-travel malaria queries for children up to 5 years reported to a national advice line Poster presented at <i>CISTM16</i> , Washington FC, June 2019	LF SK DP
Sakhiya, L., Kanagarajah, S., Simons, H. and Patel, D., Profile of older travellers from the UK – an analysis of enquiries to a national travel health advice line. Poster presented at <i>CISTM16</i> , Washington FC, June 2019	SK HS DP

Wong, V., Sharrocks, K., Kanagarajah, S., Simons, H. and Patel, D., Enquiries to a national travel health advice helpline by healthcare professionals regarding yellow fever vaccination over a three-year period. Poster presented at <i>CISTM16</i> , Washington DC, June 2019	SK HS DP
McGuinness SL, Lahmar A, Nothdurft H, Patel D, Schel N, Schlagenhauf P, Kohl S. Members' Use, Perceptions and Experiences of the ISTM Website: a mixed methods study Poster presented at <i>CISTM16</i> , Washington DC, June 2019	DP
Patel, D. and Simons, H., ITN Productions/Royal Society of Tropical Medicine and Hygiene (RSTMH). <i>Access to Health – Global Challenges</i> . Video recording. Clip presented at 11 th <i>European Congress on Tropical Medicine and International Health</i> . Liverpool School of Tropical Medicine: September 2019	DP HS

E. Education and Training

London School of Hygiene and Tropical Medicine <i>Lecturer, Diploma in Tropical Medicine and Hygiene</i> <i>Lecturers, Short Course in Travel Medicine</i>	DP VF DP
Liverpool School of Tropical Medicine <i>Lecturer, Diploma in Tropical Nursing</i> <i>Examiner, Diploma in Tropical Nursing</i> <i>Lecturer, Diploma in Tropical Medicine and Hygiene</i> <i>Lecturers, Diploma in Travel Health</i>	HS RT LF LB LF DP HS
British Mountain Medicine Society <i>Lecturer, Diploma Mountain Medicine</i>	LB
Royal College of Physicians and Surgeons of Glasgow <i>External examiner, Foundation in Travel Medicine</i>	RT
Manchester University <i>Lecturer, Tutor, and Supervisor, MSc Occupational and Environmental Medicine</i>	DP
Royal Society of Tropical Medicine & Hygiene and Kent Institute of Medical Sciences <i>Lecturer, Diploma in Occupational Medicine</i>	DP
University College London <i>Examiner, MBBS Finals</i>	VF

NaTHNaC	LB MG
<i>Trainers, Yellow Fever Vaccination Centre Training Seminars, England, Wales and Northern Ireland</i>	RF AS HS
<i>Aspects of Travel Health Training Workshops: New to Travel Health and Updates</i>	LB HS
<i>Webinar series</i>	LF HS

NaTHNaC thanks our partner organisations for their support, expertise and commitment to 'Protecting the Health of British Travellers'

Department of Health and Social Care

www.gov.uk/government/organisations/department-of-health-and-social-care

Liverpool School of Tropical Medicine

www.lstmed.ac.uk

Public Health England

www.gov.uk/government/organisations/public-health-england

The Hospital for Tropical Diseases

www.thehtd.org

University College London Hospitals NHS Foundation Trust

www.uclh.nhs.uk

National Travel Health Network and Centre (NaTHNaC)

<https://nathnac.net/>

